



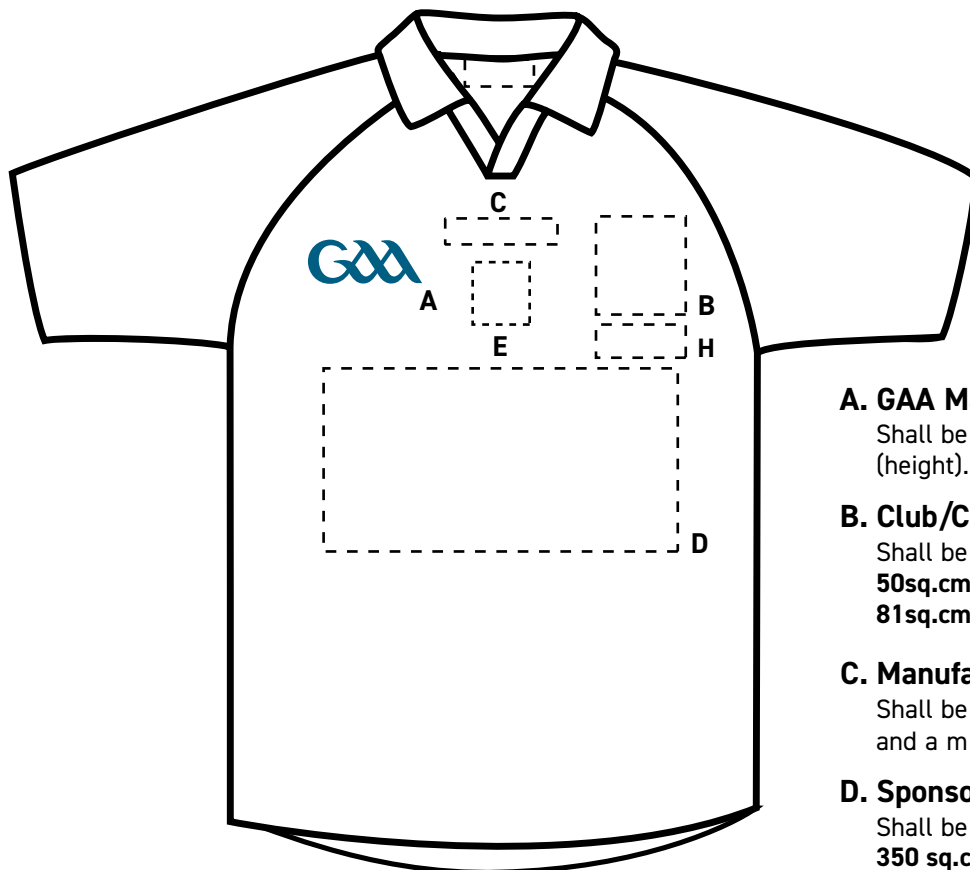
Ard Chomhairle at its meeting on 18<sup>ú</sup> Meán Fomhair 2021 approved the following specification governing jersey and replica jersey sleeve patches pursuant to Code 3.2 (f):

- (1) Sleeve patches are permitted for use on all jerseys and replica jerseys
- (2) The total area of the sponsor's brand name(s), distinctive marks or logo shall not exceed an area of 75 square centimetres.
- (3) No one sponsor brand may be applied to any more than three county jerseys or county replica jerseys.
- (4) No one sponsor brand may hold any more than two of the four positions on the county jersey.
- (5) A unit shall not be entitled to enter into a sponsorship agreement with regard to the use of a sponsor's brand names(s), distinctive marks or logo unless it has obtained the prior written approval of the Central Council or the County Committee, as appropriate.
- (6) The provisions of Codes 3.1 and 3.2 apply.

**Penalty:**

Any unit or team in breach of this Code shall be liable to disqualification and/or loss of expenses, and individual(s) to a suspension of not less than twenty-four weeks or to expulsion.

# Playing Gear and Equipment Regulations



**A. GAA Mark:**

Shall be **77mm** (width) x **28mm** (height).

**B. Club/County Logo:**

Shall be a minimum area of **50sq.cm** and a maximum area of **81sq.cm**.

**C. Manufacturer's Logo:**

Shall be a maximum width of **75mm** and a maximum height of **20mm**.

**D. Sponsor's Logo:**

Shall be a maximum area of **350 sq.cm**

**E. Number:**

Shall sit below the manufacturer logo, between the GAA mark and the County/ Club Crest and shall be a **50mm** (height)

**F. Club/County Logo:**

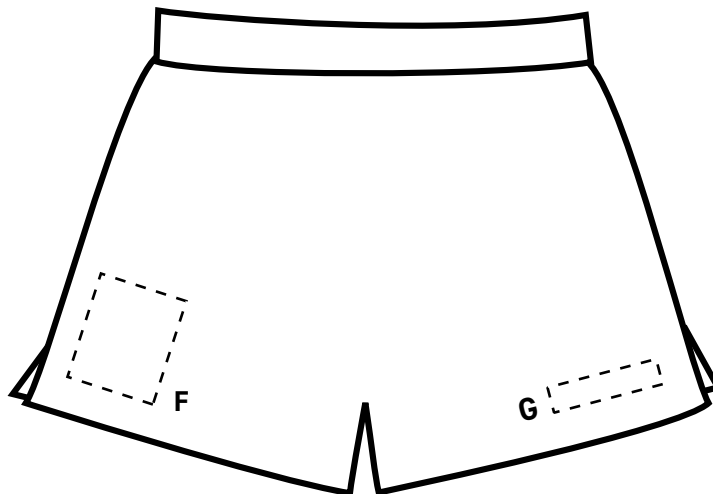
Shall be a minimum area of **50sq.cm** and a maximum area of **81sq.cm**. Club/County logo may also appear on the side panel on shorts, in this case GAA logo can appear in position F if desired.

**G. Manufacturer's Logo:**

Shall be a maximum width of **75mm** and a maximum height of **20mm**.

**H. Event Name:**

Below County/Club crest and above County sponsor approved by GAA Licensing Department



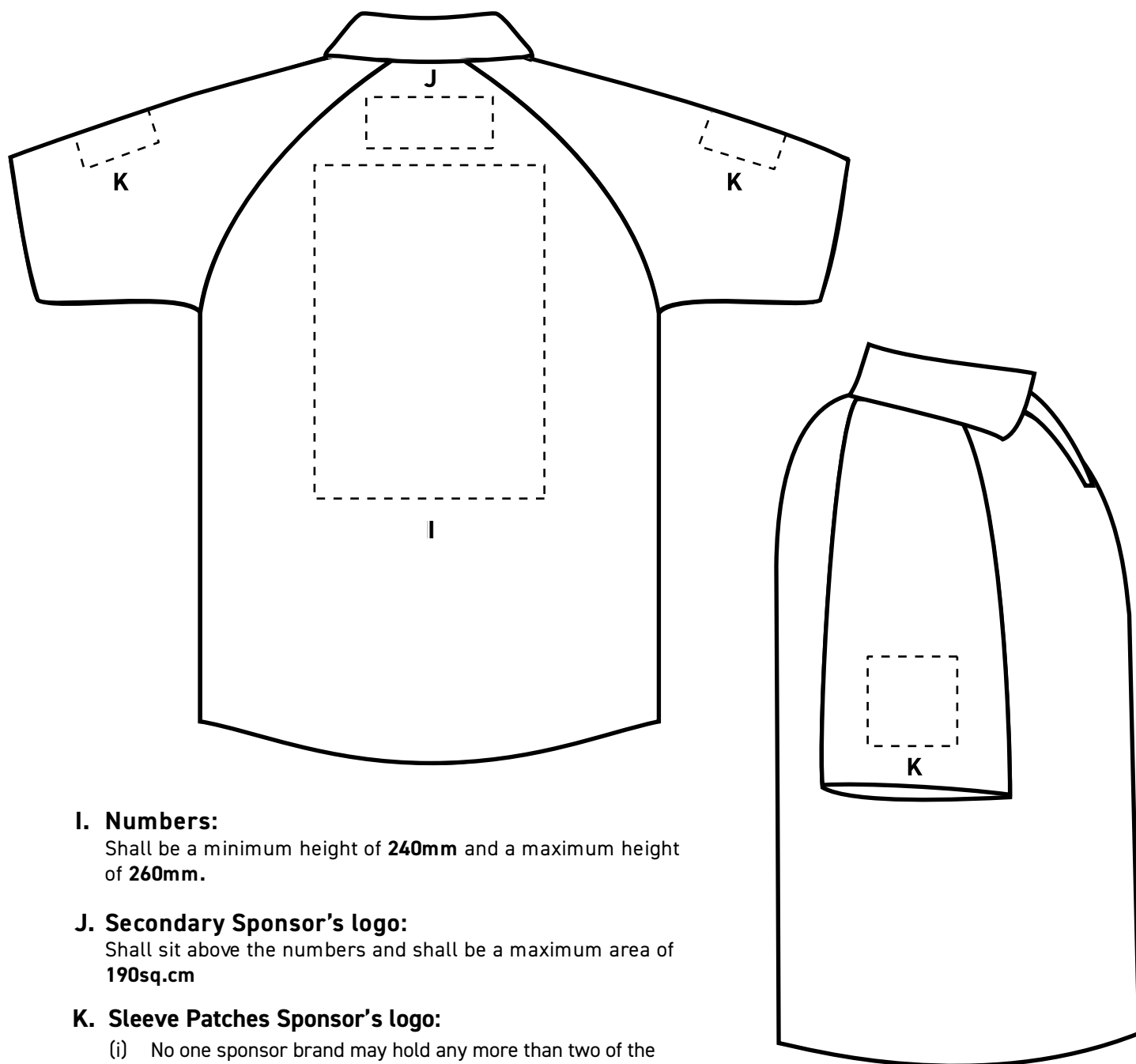
## Appendix A:

## Jersey / Shorts



\* The designated areas outlined with dotted lines are the only locations where graphics may be placed.

# Playing Gear and Equipment Regulations



## I. Numbers:

Shall be a minimum height of **240mm** and a maximum height of **260mm**.

## J. Secondary Sponsor's logo:

Shall sit above the numbers and shall be a maximum area of **190sq.cm**

## K. Sleeve Patches Sponsor's logo:

- (i) No one sponsor brand may hold any more than two of the four positions on the jersey or replica.
- (ii) No one sponsor brand may be applied to any more than three County jerseys and replica jerseys.
- (iii) Size of the sleeve patches are set at maximum area of **75cm<sup>2</sup>** per sleeve. That area shall be calculated by measuring the total area, including background highlighting, covered from one extremity to the other.

## Appendix A:

### Jersey: Backview / Sideview



\* The designated areas outlined with dotted lines are the only locations where graphics may be placed.